



Incline Conveyor Belt KFG-P 2000 ECO



High-Quality. Short Delivery Time. Mobile Use.



Incline Conveyor Belt KFG-P 2000 ECO



» Suitable for mobile use for vertical transport of small parts. «

The KFG-P 2000 and KFG-P 2000 ECO conveyor systems are based on the mk 2000 profile and their compact conveyor frame design makes them ideal for demanding continuous duty in multi-shift operation. As with all mk belt conveyor systems, the round driving rolls make it easy to adjust the belt. On inclines, the belt is guided by welded-on longitudinal profiles.

Another quality feature is the stainless steel sheet installed below the belt running surface, which ensures long-term wear resistance. This conveyor system is primarily used to transport small parts (made from plastic, for instance).

The modular design of the conveyor system combined with the general advantages of profile technology make the conveyor excellently suited for integration into existing systems or for use as a mobile transport unit (e.g. for filling containers).

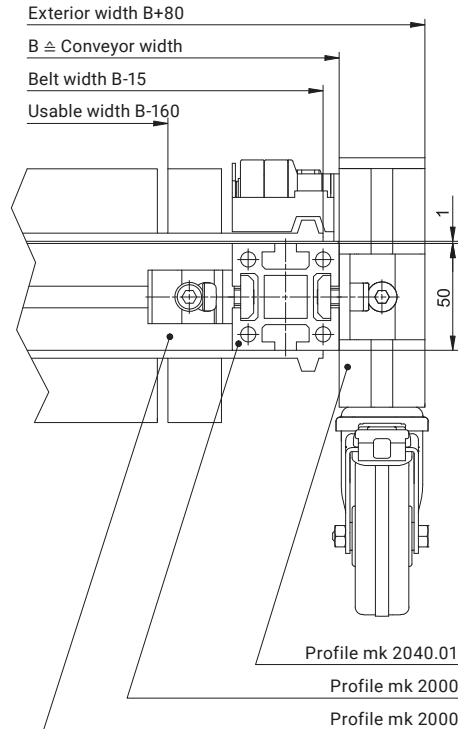
Incline Conveyor Belt KFG-P 2000 ECO



Benefits of the KFG-P 2000

- Vertical transport for connecting different heights
- Moving transport unit for mobile use
- Ideal for integration into existing systems
- Compliant with the applicable Machinery Directive and occupational safety regulations – additional protective device guard not required
- Belts can be replaced with little work
- Optional cycling operation and control with a frequency inverter
- Optional motor overload switch

Cross Section

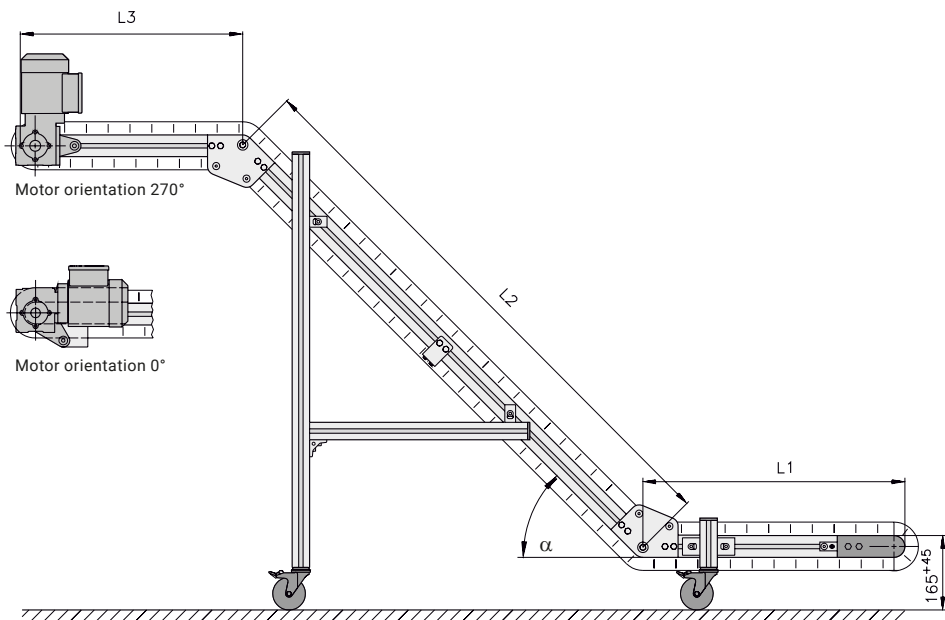


KFG-P 2000 ECO

Properties

ECO stands for economy: which means high quality materials and meeting customer requirements at an attractive price. The limited number of variants ensures fast delivery and high availability. With the optimal ratio of effective width to total width, the conveyor is ideal for integration in existing systems. Its mobility means it can be used as a versatile transport unit for filling containers or pallet cages.

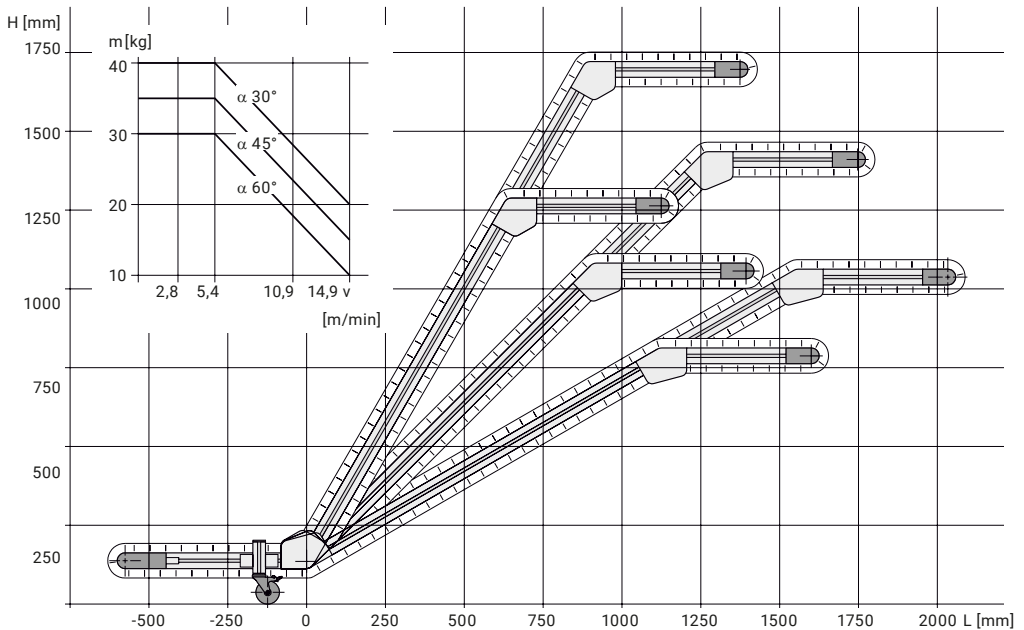
B20.00.015



Technical data

Conveyor length L (L1+L2+L3)	2400/2900 mm (L1 = 600 mm, L2 = 1300/1800 mm, L3 = 500 mm)
Conveyor width B	400, 500, 600 mm (usable width: B-160 mm)
Drive location	discharge end left/right, above, 270° motor orientation, 0° for surcharge
Drive and speed	2.8; 5.5; 11.2; 15.2 m/min, others on request or with reglomat
Load capacity	depending on conveying angle and speed, up to 40 kg
Belt incline α	30, 45 and 60°
Conveyed product	height up to 55 mm, length up to 300 mm, weight up to 5 kg/compartment
Belt	GU-V0106-028DG
Cleats and side walls	high transverse cleats MT30 and 30 mm side wall, polyurethane, green with L2=1300, 16 transverse cleats with 303 mm between cleats with L2=1800, 19 transverse cleats with 308 mm between cleats

B20.00.015



See the table for the optimal variant for your application. Without additional specifications, the conveyor is designed with a top, front left, 270° drive location and speed of 5.4 m/min.

Variant (L2 1300 mm)	A1	A2	A3	A4	A5	A6	A7	A8	A9
Conveyor width B [mm]	400	400	400	500	500	500	600	600	600
Belt incline α	30°	45°	60°	30°	45°	60°	30°	45°	60°

Variant (L2 1800 mm)	B1	B2	B3	B4	B5	B6	B7	B8	B9
Conveyor width B [mm]	400	400	400	500	500	500	600	600	600
Belt incline α	30°	45°	60°	30°	45°	60°	30°	45°	60°



Maschinenbau Kitz GmbH
Headquarters of the
mk Technology Group

Ampèrestrasse 18
53844 Troisdorf, Germany
Germany

Tel. +49 228 4598-0
info@mk-group.com

